



District *pen*

BACK TO SCHOOL ISSUE

WELCOME BACK!



It is that time again, welcome to a new and exciting school year! Our focus this year will again be on data-driven instruction and meeting the needs of each individual child. We are working hard at assessing all of our students and making

sure that they are receiving the appropriate instruction in order to move forward in our standards-based system.

Our test scores have come in and are very solid for 2010/2011. Once again, the success that the district is experiencing does not happen without dedicated, hardworking staff and students. We are fortunate to have many great staff members returning and a very talented group of new teachers coming in. Along with great kids and supportive villages, we have all the ingredients in the educational recipe for success.

I would like to introduce to you our new teachers for 2011/2012:

- Tate Gooden – Chignik Bay Secondary
- Nancy Anderson – Chignik Lagoon Special Education
- Alecia Nef – Chignik Lake Elementary
- Melissa Ward – Perryville Elementary
- Nicole Stover - Port Heiden Generalist
- Dorothy Loftin – Egegik Secondary
- Jordan Pufka - Kokhanok Secondary
- Kathleen Van Dusen – Newhalen Special Education
- Matthew Stark – Technology Coordinator (based in PVL)
- Bob Rychnovsky – South Area Itinerant Special Education

Please join us in welcoming our staff and teachers back to their schools and villages. I look forward to another great school year!

Sincerely,
Ty Mase, Superintendent

Benchmark (proficient or advanced) Student Comparison							
	2005	2006	2007	2008	2009	2010	2011
% benchmark in Math	33%	34.7%	46.3%	48.5%	58.4%	66.8%	67.7%
% benchmark in Reading	55.1%	60.9%	67.8%	66.1%	67.3%	75.5%	71%
% benchmark in Writing	46.1%	54.1%	51.1%	56.2%	62.1%	67.6%	69.4%



2011-12 School Board Members

Front row left to right: Christina Salmon, Rebecca Jensen

Back row left to right: Austin Shangin, Sue Evanoff, Patty Alsworth, Gerda Kosbruk, and Lisa Natwick

SCHOOL PICTURES 2011-12

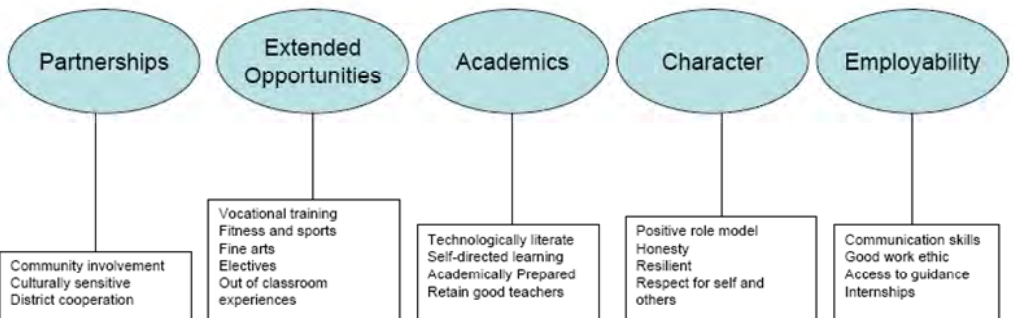


School Pictures will be taken starting the first week in September (weather permitting) and will continue each Tuesday/Wednesday until December 1st. Dan Bandel, out of King Salmon, will be taking the pictures again this year.

Each school will have the information needed prior to the photographer's visit, with as much advance notice as we can provide.

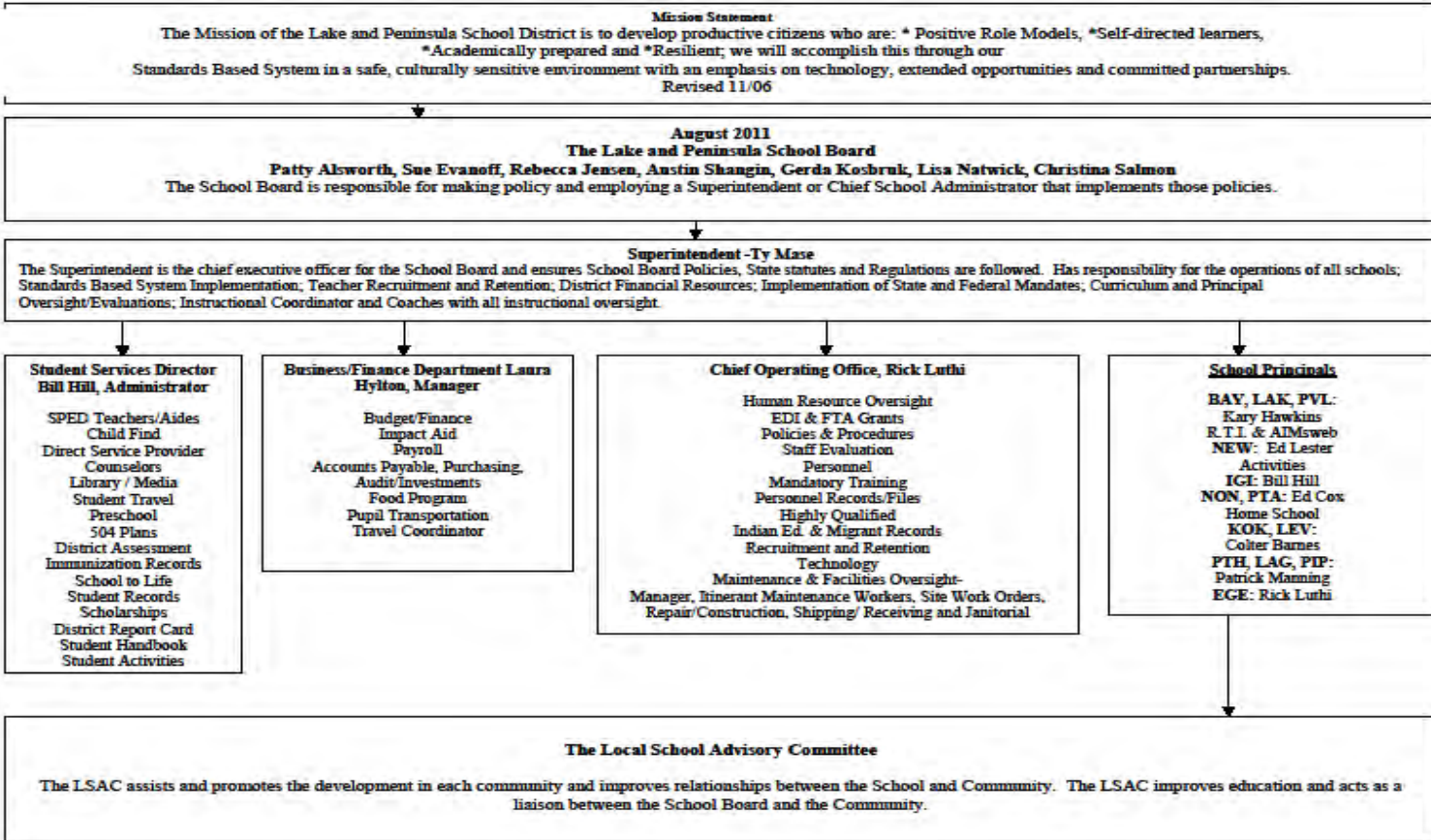
The Lake and Peninsula School District's Shared Vision

The mission of the Lake and Peninsula School District is to develop productive citizens who are positive role models, self-directed learners, academically prepared and resilient. We will accomplish this through our Standards-Based System in a safe, culturally sensitive environment with an emphasis on technology, extended opportunities and committed partnerships.



Written November 3, 2006

THE LAKE & PENINSULA SCHOOL DISTRICT ORGANIZATIONAL CHART 2011-12



What's New in LPSD!



Graduation Requirements – Our minimum requirements have shifted to Level 10 across the different content areas. The exception will be Social Studies, which is three of four levels (8, 9, 10 or 11) while Math is level 10 or 11.

Christmas Break – This year's district-wide (with the exception of Port Alsworth) Christmas break will be three weeks December 23-January 13.

Clubs - All activities in which students participate as a member of a club, team, or other organization and all intramural activities that are not recognized as district funded activities will be considered a "club." Anyone who wishes to request to add an activity to the Superintendent's approved list of activities should first submit the request to the school principal. The district will compensate a coach or supervisor but will not fund travel.

Activities on the Superintendent's approved list may hold practices, events or activities in the school facility using approved equipment and coaching / supervising. Students involved in club activities are subject to all LPSD eligibility requirements.

Eligibility - Eligibility requirements for all extra-curricular and off-site curricular events is as follows:

- ⇒ Starting their freshman year, a student must have passed a minimum of 4 levels (or classes) the previous school year to be eligible. An eighth grade student is eligible regardless of their prior academic performance.
- ⇒ A middle school student must be developing in level 7 Employability to be eligible for travel. A High School student must be developing in level 8.
- ⇒ The student must be developing in all content areas. A student will be eligible when they bring their emerging scores to developing or proficient.
- ⇒ The student must have no more than ten absences a semester. If absences exceed 10, the student will be ineligible for the remainder of the semester.
- ⇒ Suspensions (in or out of school) will result in a student becoming ineligible for a minimum of ten school days from the end date of the suspension.
- ⇒ The students must be drug, alcohol and tobacco free.

Web Site – Please check in as our new web site is updated frequently. In addition, look LPSD up on Facebook for current photos, announcements and happenings.

Attendance Incentive - Within two weeks of the end of the quarter, the Registrar will calculate an attendance rate for each site. Those schools with an attendance rate of 90% & higher will have their name placed in a hat for a drawing. The school/name that is selected wins a pizza party – D&D pizza & soft drinks will be flown in for staff & students.

Notes on the Importance of Good Attendance

In reviewing attendance data for the 2010-11 Senior class, we came across two interesting statistics.

- the average senior high (4-year) attendance rate for those students who earned diplomas during the year was 92.61%
- the average senior high (4-year) attendance rate for these students who did not earn diplomas during the year was 78.10%.

Without getting bogged down in the statistics. . . .

If we assume an average school year consisted of 170 days during their senior high years, then:

- students who missed less than 13 days of school per year were very likely to graduate in 4 years
- students who missed more than 30 days a year were not very likely to graduate in 4 years

Attending school makes a difference.

TESTING DATES FOR DISTRICT READING ASSESSMENTS

SRI Testing

08/30/11-09/02/11
11/28/11-12/02/11
02/06/12-02/10/12
04/23/12-04/27/12

AIMsweb Testing

09/06/11-09/16/11
01/18/12-02/01/12
04/30/12-05/11/12

Certified Staff 2011-12



Quarter Dates

	1st Quarter Start/ Stop	2nd Quarter Start/ Stop	3rd Quarter Start /Stop	4th Quarter Start/Stop
<u>BAY</u>	Aug/17/11 - Oct/14/11	Oct/17/11 - Dec/22/11	Jan/16/12 -Mar/16/12	Mar/19/12 -May/18/12
<u>LAG</u>	Aug/17/11 - Oct/14/11	Oct/17/11 - Dec/22/11	Jan/16/12 -Mar/16/12	Mar/19/12 - May/18/12
<u>LAK</u>	Aug/17/11 - Oct/14/11	Oct/17/11 - Dec/23/11	Jan/16/12 -Mar/16/12	Mar/19/12 - May/18/12
<u>EGE</u>	Aug/17/11 - Oct/14/11	Oct/17/11 - Dec/21/11	Jan/11/12 -Mar/16/12	Mar/19/12 - May/18/12
<u>IGI</u>	Aug/17/11 - Oct/14/11	Oct/17/11 - Dec/22/11	Jan/16/12 -Mar/16/12	Mar/19/12 - May/18/12
<u>KOK</u>	Aug/17/11 - Oct/14/11	Oct/17/11 - Dec/22/11	Jan/16/12 -Mar/16/12	Mar/19/12 - May/18/12
<u>LEV</u>	Aug/17/11 - Oct/14/11	Oct/17/11 - Dec/22/11	Jan/16/12 -Mar/16/12	Mar/19/12 - May/18/12
<u>NEW</u>	Aug/17/11 - Oct/14/11	Oct/17/11 - Dec/22/11	Jan/16/12 -Mar/16/12	Mar/19/12 - May/18/12
<u>NON</u>	Aug/17/11 - Oct/14/11	Oct/17/11 - Dec/22/11	Jan/16/12 -Mar/16/12	Mar/19/12 - May/18/12
<u>PVL</u>	Aug/17/11 - Oct/14/11	Oct/17/11 - Dec/22/11	Jan/16/12 -Mar/16/12	Mar/19/12 - May/18/12
<u>PIP</u>	Aug/17/11 - Oct/14/11	Oct/17/11 - Dec/22/11	Jan/16/12 -Mar/16/12	Mar/19/12 - May/18/12
<u>PTA</u>	Aug/17/11 - Oct/14/11	Oct/17/11 - Dec/16/11	Jan/10/12 -Mar/16/12	Mar/19/12 - May/18/12
<u>PTH</u>	Aug/17/11 - Oct/14/11	Oct/17/11 - Dec/22/11	Jan/16/12 -Mar/16/12	Mar/19/12 - May/18/12

LUNCH PRICES:

- Preschool - 6th grade
\$1.75
- 7th grade - 12th grade
\$2.25
- Adult - \$5.00



State Entrance Requirements

Any child who is five years old on or before September 1, 2011 is eligible to attend school. Preschool children must be three on or before September 1, 2011 to attend the preschool.

Preschool may be held in school sites that meet a minimum student enrollment and have a qualified preschool instructor. For more information, please contact your local principal or head teacher.

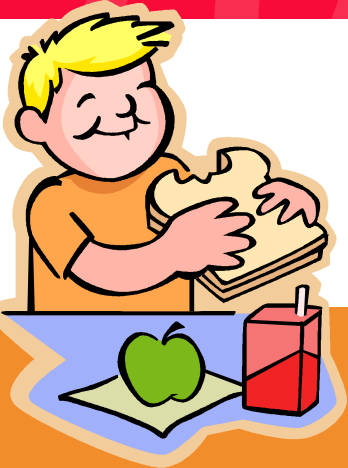


Standard Based Assessments

Each year students in grades 3-10 take the state required Standards Based Assessment (SBA). These tests measure the students' skill level on the state's standards in reading, writing and mathematics. The students' scores on the exams are one of the ways that we measure how well we are doing as a school district. You will soon receive the District Report Card that will detail the overall district result



For the 2011-2012 school year the SBA test will be administered in April - more information will be provided as the date nears.



Microwave Use

Due to safety and sanitation, microwave use by students is not allowed in Lake and Peninsula School District kitchens. If you are sending lunch with your children, you must send something that will not require heating.

Lunch Program Charge Policy

The Lake and Peninsula School District has a \$50.00 maximum charge policy for lunches. The policy states "When a past due lunch bill exceeds \$50.00, the parent will be notified that their child is no longer eligible to receive lunches *on a charge basis* until the past due billing is paid".

It is suggested that parents who are having difficulty paying their child(ren)'s lunch bill be informed of and given the opportunity to complete an "Application for School Nutrition Services". Upon approval of this application your child(ren) will receive free or reduced price meals. Please refer to the "PUBLIC RELEASE" (back page) in this newsletter.

High School Graduation Requirements 2011-2012 School Year



Students must pass all three portions of High School Graduate Qualifying Exam (Math, Reading, and Writing), have at least 21 credits and meet LPSP's minimum graduation levels to be eligible to graduate during the 2011-12 school year.

Reading	Level 10
Writing	Level 10
Math	Level 10 / 11 *
Social Studies*	Level 8-11
Science*	Level 10
Technology	Level 10
Cultural Awareness	Level 10
Employability	Level 10

* Social Studies - 3 of the 4 credit earning levels must be completed to meet graduation requirements.

* Math-Level 10 or Level 11 must be completed to meet graduation requirements.





Special Education

The Lake and Peninsula School District Special Education team is committed to seeing all students within the District succeed in their educational pursuits. The team aims to meet this goal by working with teachers, aides, parents and students to facilitate the individual child's ability to achieve.

The District's Special Education team is lead by Nancy Guthrie and Bill Hill, Director of Student Services. The other team members are:

- ◆ **Nancy Anderson** – Chignik Lagoon School
- ◆ **Colleen Gabriel:** Kokhanok / Levelock / Igiugig/ Egegik schools
- ◆ **Kathleen Van Dusen:** Newhalen School
- ◆ **Regina Feliciano:** Nondalton School
- ◆ **Bob Rychnovsky:** Perryville / Chignik Bay / Chignik Lake / Port Heiden / Pilot Point schools

All of these educators bring to the district a wealth of experience, knowledge, and instructional strategies to help each and every student who has a special or unique education need.

Special Education services are provided in the Lake and Peninsula School District at no cost to the parent of those students who qualify as having a disability that impacts their ability to achieve academically. Students who are identified by their teachers, parents, or other concerned adults, as having possible academic issues can be referred to special education for possible screening, assessment or to begin the intervention process. If you have questions about your child or if you would like general information regarding services that could be provided to your child please feel free to contact your local principal, special education teacher or Bill Hill at 907 -246-4280. The Special Education Team looks forward to working with you this coming school year to meet the needs of every student facing a challenge in learning. By working together we can help our students achieve more than they ever dreamed possible.

Websites of Interest



The Lake and Peninsula
School District
www.lpsd.com

The Lake and Peninsula
School District School
Board
[www.lpsd.com/
school_board.htm](http://www.lpsd.com/school_board.htm)

The Lake and Peninsula
Borough
www.lakeandpen.com



MIGRANT EDUCATION

Migrant Education is a federally funded program based on students whose families engage in seasonal work such as fishing, that takes them away from their homes. This is an important funding source for the Lake and Peninsula School District. In the past they have allowed us to supplement many of our existing programs.

The District has again contracted with LaVonne Hendricks to do the recruiting for Migrant Education. Either Ms. Hendricks, Ruth Ann Kunnuk or Audrey Kelly (Ms. Hendricks' assistants) will be calling each household sometime this fall. We appreciate your cooperation in providing them with answers to a few simple questions.

Basic Interview Questions to Determine Program Eligibility:

- ◆ Did you or any member of your family travel to look for or get work in commercial or subsistence fishing or fish processing in the last 3 years?
- ◆ When? When was the last time you traveled to look for or do work in fishing or fish processing?
- ◆ Where? Where did you travel to? Where did you travel from?
- ◆ Who? Who traveled along when the work was being done?

Child Find

Is a free health and developmental screening service that is offered by the school district and the local village health aides in an effort to identify any physical and/or Educational conditions which may impede a child's development or rate of learning.

For further information concerning this service for children between the ages of 3-21, please contact:

- Your local school **Principal, Head Teacher**, or
- **Bill Hill**, Director of Student Services, (907) 246-4280, or
- Contact **Alex Nagle**, Child Find Coordinator, (907) 749-2213

For further information concerning special services for children birth to age 3, please contact

Gina Pope - ILP Representative
Bristol Bay Area Health Corporation
Infant Learning Program
P.O. Box 130
Dillingham, AK 99576
(907) 842-3398 or Toll Free (888) 648-4325



The above screening services are offered free of charge to all residents of The Lake and Peninsula School District.

LPSD Student Eligibility 2011-12

An LPSD student must adhere to the following guidelines if they wish to be eligible for school-sponsored trips:

- ◇ Starting their freshman year, a student must have passed a minimum of 4 levels (or classes) the previous school year to be eligible. An eighth grade student is eligible regardless of their prior academic performance.
- ◇ A middle school student must be developing in level 7 Employability to be eligible for travel.
- ◇ A high school student must be developing in level 8 Employability to be eligible for travel.
- ◇ The student must be developing in all content areas. A student will be eligible when they bring their emerging scores to developing or proficient.

LPSD defines developing and emerging as follows:

- ◇ Developing-The student is scoring below 80% on classroom assignments and projects. The student is making steady progress toward 80% proficiency. Assignments are complete and handed in on time
- ◇ Emerging-The student is scoring below 80% on classroom assignments and projects. The student is not making progress toward the 80% proficiency. Assignments are not complete and/or are not handed in on time.
- ◇ The student must have no more than ten absences a semester. If absences exceed 10, the student will be ineligible for the remainder of the semester.
- ◇ Suspensions (in or out of school) will result in a student becoming ineligible for a minimum of ten school days from the end date of the suspension.
- ◇ The students must be drug, alcohol and tobacco free. Students who are caught using these substances will be subject to district policy as outlined in the student handbook.

For the student athlete:

All of the above guidelines are required for student athletes. In addition:

- ◇ The student must maintain a 90% attendance rate at practice to be eligible for travel. What constitutes 90% attendance is at the discretion of the site administrator.
- ◇ The student must be in attendance the day before, the day of and the next school day after an event. If they are absent on any of these days, they will be ineligible for the next event. A student must attend the entire day of school on the day of an event. A student who is more than 30 minutes late is considered absent and will not be eligible for the event.

Physicals: A student must have a physical and ASAA physical form completed by the first day of practice (for both Mix 3 and ASAA sanctioned sports). The physical must be completed by a physician, physician assistant or advanced nurse practitioner. If, due to scheduling, a student is unable to get their physical before the start of practice, a waiver form needs to be requested and returned to the district office.

If a student is sent home from a trip:

- ◇ A letter will be sent to the parents or guardians and the student will not be allowed to travel again until the district receives reimbursement, in the form of community service, for the cost of the trip. The community service will be arranged through the Activities Director.
- ◇ The student will be ineligible for all extracurricular travel for 45 calendar days.
- ◇ After the 45-day suspension period, the student must submit a letter of apology to the LPSD Superintendent and ask for their eligibility to be reinstated. The letter must contain the offense and the corrections made to ensure it won't happen again.
- ◇ Repeat violations resulting in being sent home will be reviewed by the School Board and the length of ineligibility will be determined.
- ◇ A student will also be held to site and district discipline policies when they return to their school site.

Other instances that will result in a review of a student's eligibility:

- ◇ Leaving a school sponsored trip for non-emergency situations.



State of Alaska School/Child Care/Head Start and Preschool Immunization Requirements*

Vaccine-Preventable Diseases	Infancy through Preschool	Kindergarten through 12 th grade
Diphtheria, Tetanus, Pertussis (DTaP/DT/Td/Tdap)	♦	♦
Polio	♦	♦
Measles, Mumps, Rubella (MMR)	♦	♦
Hepatitis A	♦	♦
Hepatitis B	♦	♦
Varicella (Chickenpox)	♦	2 doses grades K through 6 th
Hib (<i>Haemophilus influenzae</i> type b)	Under age 5 yrs only	Not required

* Exemptions may be granted for medical or religious reasons. The number of doses and type of vaccine required varies depending upon child's age, grade, and prior vaccination history. Check with your health care provider for details.

Tobacco-Free Schools

Ample research has demonstrated the health hazards associated with the use of tobacco products, including smoking and the breathing of second hand-smoke. As role models, district employees should demonstrate conduct that is consistent with school programs to discourage students from using tobacco products.

In accordance with the law and to promote the health and safety of all students and staff, the School Board prohibits smoking or the use of tobacco products anywhere and anytime on district property and in district vehicles, including at athletic events and meetings.

The Superintendent or designee shall post appropriate signs prohibiting smoking in accordance with the law.

This prohibition does not apply to any private residence owned or leased by the district for housing purposes.

Students Tobacco

Smoking presents a health hazard which can have serious consequences both for the smoker and the nonsmoker. Students shall not be allowed to smoke, chew or possess tobacco or nicotine products on school property or during school hours, at school sponsored events, or under the supervision of district employees. Students who violate this school policy shall be subject to disciplinary procedures which may result in suspension from school.

The board may provide instruction regarding the effects of smoking on the human body and may take steps to discourage students from smoking.



SAFE AND DRUG FREE ZONE



The Alaska State Legislature has created a 500 foot "Drug Free Zone" around all public schools. These "Drug Free Zones" are intended to promote partnerships between the criminal justice system, schools, and communities to protect our children, increase prevention efforts, and to enhance the school learning and environment by constricting the supply of and lessening the demand for drugs.

Tobacco possession and/or use by anyone under the age of 18 is illegal. Your assistance in impressing this fact upon students is greatly appreciated.

State law prohibits guns being brought onto school property by any person. Sanctions for violation of this policy include a mandatory one year expulsion for any student found in violation.

It is the intention of the school board, administration, and staff at Lake and Peninsula Schools to provide a safe and drug-free learning environment for the students in our school district.

The Lake and Peninsula School District Notice for Directory Information

The Family Educational Rights and Privacy Act (FERPA), a Federal law, requires that the Lake and Peninsula School District, with certain exceptions, obtain your written consent prior to the disclosure of personally identifiable information from your child's education records. However, the Lake and Peninsula School District may disclose appropriately designated "directory information" without written consent, unless you have advised the District to the contrary in accordance with District procedures. The primary purpose of directory information is to allow the Lake and Peninsula School District to include this type of information from your child's education records in certain school publications. Examples include:

- A playbill, showing your student's role in a drama production;
- The annual yearbook;
- Honor roll or other recognition lists;
- Graduation programs; and
- Sports activity sheets, such as for wrestling, showing weight and height of team members.

Directory information, which is information that is generally not considered harmful or an invasion of privacy if released, can also be disclosed to outside organizations without a parent's prior written consent. Outside organizations include, but are not limited to, companies that manufacture class rings or publish yearbooks. In addition, two federal laws require local educational agencies (LEAs) receiving assistance under the Elementary and Secondary Education Act of 1965 (ESEA) to provide military recruiters, upon request, with three directory information categories - names, addresses and telephone listings, unless parents have advised the LEA that they do not want their student's information disclosed without their prior written consent.

The Lake and Peninsula School District has designated the following information as directory information:

- Student's name
- Participation in officially recognized activities and sports
- Address
- Telephone listing
- Child's photograph
- Weight and height of members of athletic teams
- Degrees, honors, and awards received
- Date and place of birth
- Major field of study
- Dates of attendance
- The most recent educational agency or institution attended



If you do not want the Lake and Peninsula School District to disclose directory information from your child's education records without your prior written consent, you must notify the District in writing by September 11, 2011. Please contact the Principal/Head Teacher at your child's school to complete the "opt out" form.

The Lake and Peninsula School District Notice for Student Record Request

The Lake and Peninsula School District forwards all educational records (including discipline and suspension reports) to other agencies or institutions that have requested records and in which the student seeks or intends to enroll. At the request of the parent or eligible student a copy of the record that was disclosed will be provided.

LPSD Activities Schedule 2011-12

Date	Session (# students)	Location	Notes
Sept.11-14	New Beginnings	Newhalen	
Sept. 14-17	X-Country (XC)	Nondalton	
Sept. 19-24	Phase I	Newhalen	
Sept. 23-24	XC Regionals	New Stuyahok	
Sept. 26-Oct. 1	Phase I	Newhalen	
Oct. 1	ASAA XC State	Anchorage	
Oct. 13-15	AASG	Anchorage	
Oct. 17-19	AFN	Anchorage	
Oct. 18-21	Inservice	Bristol Bay School	
Oct. 26-28	V-Ball Jamboree	North @ Levelock	
Oct. 26-28	V-Ball Jamboree	South @ Port Heiden	
Nov. 14-16	V-Ball Mix 3	Newhalen	
Nov. 17-19	V-Ball Mix 6 Regionals	Newhalen	
Nov. 26- Dec. 2	DC Close-up	Washington D.C.	
Dec. 1-3	V-Ball Girls Regionals	Togiak	
Dec. 2-3	Wrestling Regionals	Dillingham	
Dec. 8-10	ASAA V-Ball State	Anchorage	
Dec. 9-10	ASAA Wrestling State	Anchorage	
Dec. 23-Jan 15	Winter Vacation		
Jan. 24-27	Battle of the Books	Teleconferences	
Feb. 1-3	B-Ball Jamboree	Kokhanok	
Feb. 5-10	AK Close-Up	Juneau	
Feb. 13-16	New Beginnings	Newhalen	
Feb. 20-25	Phase I	Newhalen	
Feb. 20-23	District B-Ball	TBD	
Feb. 27-Mar. 2	State Battle of the Books	Teleconferences	
Feb. 27-Mar. 2	Spring Vacation		
Mar. 1-3	Regional Basketball Boys	Boys @ Newhalen	
Mar. 1-3	Regional Basketball Girls	Girls @ Manokota	
Mar. 5-10	Phase I	Newhalen	
Mar. 11-16	ASAA Basketball	Anchorage	
Mar. 12-15	New Beginnings	Newhalen	
Apr. 3-6	State Testing		
Apr. 9-13	AA Meet		
Apr. 13-14	NYO	Dillingham	
Apr. 26-28	NYO State	Anchorage	

Spring Testing
Dates:

SBA's
April 03-06 2012

2011 HSGQE
Retest



This year's HSGQE Retest
will be given
October 04-06 2011

Contact:
Bill Hill, Director of Student
Services, at the District
Office: (907) 246-4280

Parent Notification of
Highly Qualified
Teachers and
Paraprofessionals

Parents of Lake and Peninsula School District may request information regarding the professional qualifications of their child's teacher(s) and/or paraprofessionals.

Specifically, parents can ask if their teachers have met State qualifications for licensure and if any teachers are under emergency or provisional certification. In addition, parents may request information regarding the qualifications of a paraprofessional who may be working under the direct supervision of the classroom teacher.



THE LAKE AND PENINSULA SCHOOL DISTRICT



101 Jensen Drive
P.O. Box 498
King Salmon, Alaska 99613
Phone (907) 246-4280 / Fax (907) 246-4473

Phone Directory/ Certified Staff Assignments 2011-2012

DISTRICT OFFICE	PH# 907 246-4280	FAX# 246-4473	ZIP CODE 99613
Ty Mase	-----	-----	Superintendent (Ext 309)
Rick Luthi	-----	-----	Chief Operations Officer/Personnel (Ext 327)
Bill Hill	-----	-----	Student Services /SPED (Ext 325)
Laura Hylton	-----	-----	Business Manager (Ext 310)
Tim McDermott	-----	-----	Facilities & Maintenance (Ext 318)
Susan Edwards	-----	-----	Grants/Fed Programs/Stu Accounts (Ext 307)
Sherry Webster	-----	-----	Admin Sec Supt/School Board (Ext 309)
Joyce Alto	-----	-----	Payroll (Ext 311)
Hal Neumann	-----	-----	Registrar (Ext 330)
Paula Singley	-----	-----	Travel/Receptionist (Ext 0 or 302)
Sherry Tibbetts	-----	-----	Lunch Program / Accounts Payable (Ext 313)
Tammi Peterson	-----	-----	Purchase Orders / Lunch Orders & Menus (Ext 312)
Rodney Alto	-----	-----	Maintenance (Lv Message @ 317)
Bruce Lawrence	-----	-----	Shipping / Receiving / Copy Machines (Ext 317)
Glenda Egli	-----	-----	Literacy Coach / Pre-School (Ext 304)

ITINERANT POSITIONS: (Serve Multiple Sites)

Glenda Egli	Literacy Coach (South) & Preschool Coordinator	Based in King Salmon
Linda Richter	Literacy Coach (North)	Based in Nondalton
Kasie Pletcher	Counselor (South)	Based in Chignik Lagoon
Caleen Cox	Counselor (North)	Based in Nondalton
Colleen Gabriel	Special Ed (KOK, IGI, LEV, PTA, PDB)	Based in Kokhanok
Bob Rychnovsky	Special Ed (PVL, BAY, LAK, PTH, PIP)	Based in Newhalen
Marcie Lester	School to Life	Based in Newhalen
Matthew Stark	Technology (South)	Based in Perryville
Kristin Hathorn	-----Curriculum Specialist	Based in Haines
Kyle Feguson	-----Technology Systems	Based in Kenai

CHIGNIK BAY PH# 907 749-2213 FAX# 749-2261 ZIP CODE 99564

Kary Hawkins	-----	Principal
Amber Kresl	-----	Elementary
Tate Goodin	-----	Secondary Generalist

CHIGNIK LAGOON PH# 907 840-2210 FAX# 840-2265 ZIP CODE 99565

Patrick Manning	-----	Principal
Sara Erickson	-----	HeadTeacher, Elementary
Nancy Anderson	-----	SPED
Amanda Loose	-----	Secondary Generalist

CHIGNIK LAKE PH# 907 845-2210 FAX# 845-2254 ZIP CODE 99548

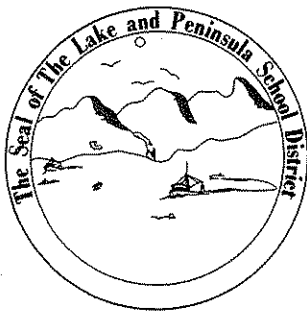
Kary Hawkins	-----	Principal
Marlene Schmitt	-----	HeadTeacher, Secondary Gen.
Alecia Nef	-----	Elementary

EGEGIK PH# 907 233-2210 FAX # 233-2254 ZIP CODE 99579

Rick Luthi	-----	Principal
April LeFevere	-----	Head Teacher/Elementary
Dorothy Loftin	-----	Secondary Generalist

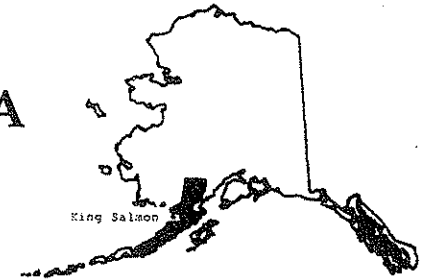
Directory 2011-2012 (Page 2)

IGIUGIG	PH# 907 533-3220	FAX# 533-3221	ZIP CODE 99613
Bill Hill	-----	-----	Principal
Katy Journey-Davey	-----	-----	Head Teacher, Secondary Gen
Andrew Scrivo	-----	-----	Elementary
KOKHANOK	H# 907 282-2218	FAX# 282-2247	ZIP CODE 99606
Colter Barnes	-----	-----	Site Administrator
Irene Wilson	-----	-----	School Secretary
Beth Hill	-----	-----	Elementary
Rebecca Mike	-----	-----	Elementary /Upper
Jordan Pufka	-----	-----	Secondary Generalist
Jenny McArthur	-----	-----	Secondary Generalist
LEVELOCK	PH# 907 287-3060	FAX# 287-3021	ZIP CODE 99625
Colter Barnes	-----	-----	Site Administrator
Maryellen Dalberg	-----	-----	Head Teacher, Elementary
Richard Bierer	-----	-----	Secondary Generalist
NEWHALEN	PH# 907 571-1211	FAX# 571-1466	ZIP CODE 99606
Ed Lester	-----	-----	Principal
Katie Olympic	-----	-----	School Secretary
Serina Montgomery	-----	-----	Elementary
Staci Anelon	-----	-----	Elementary
Mary Janti	-----	-----	Elementary/Upper
Derek Luke	-----	-----	Elementary/Middle School
Kirsten Alburg	-----	-----	Soc. Studies Secondary
Bill Cornell	-----	-----	Math, Science Secondary
Kate Wedum	-----	-----	Language Arts Secondary
Kathaleen VanDusen	-----	-----	Special Education
NONDALTON	PH# 907 294-2210	FAX# 294-2265	ZIP CODE 99640
Ed Cox	-----	-----	Principal
Sherry Balluta	-----	-----	School Secretary
Danielle Guarino	-----	-----	Elementary/Primary
Cam Metzgar	-----	-----	Elementary/Upper
Ronne Richter	-----	-----	Secondary Generalist
Nicole Metzgar	-----	-----	Secondary Generalist
Regina Feliciano	-----	-----	Special Education
PERRYVILLE	PH# 907 853-2210	FAX# 853-2267	ZIP CODE 99648
Kary Hawkins	-----	-----	Principal
Linda Jennings	-----	-----	Head Teacher, Secondary
Melissa Ward	-----	-----	Elementary
Christian Meneskie	-----	-----	Secondary Generalist
PILOT POINT	PH# 907 797-2210	FAX# 797-2267	ZIP CODE 99649
Patrick Manning	-----	-----	Principal
Troy Roberts	-----	-----	Head Teacher, Secondary
Matthew Grossmann	-----	-----	Elementary
PORT ALSWORTH "TANALIAN"	PH# 907 781-2210	FAX# 781-2254	ZIP CODE 99653
Ed Cox	-----	-----	Principal
Patty Nabinger	-----	-----	School Secretary
Tom McKennett	-----	-----	Head Teacher, Secondary
Rebecca McKennett	-----	-----	Elementary
Eliza Owens	-----	-----	Elementary
Luke Owens	-----	-----	Secondary Generalist
PORT HEIDEN "MESHIK"	PH# 907 837-2210	FAX# 837-2265	ZIP CODE 99549
Patrick Manning	-----	-----	Principal
Paulene Manning	-----	-----	Elementary
Nicole Stover	-----	-----	Elementary, Special Ed.
Jeffrey Bringham	-----	-----	Middle School Generalist
Albert Plan	-----	-----	Secondary Generalist



THE LAKE AND PENINSULA SCHOOL DISTRICT

101 Jensen Drive
P. O. Box 498
King Salmon, Alaska 99613
Phone (907) 246-4280 / Fax (907) 246-4473



FOR IMMEDIATE RELEASE

The Lake and Peninsula School District is pleased to announce our participation in the National School Lunch Program. Meals will be available to all children at our following schools: Chignik Bay, Chignik Lagoon, Chignik Lake, Egegik, Igiugik, Kokhanok, Levelock, Newhalen, Nondalton, Perryville, Pilot Point, Port Alsworth and Port Heiden. Meals meet nutritional standards set by the U.S. Department of Agriculture. Our schools will participate in the National School Lunch Program.

If your income is less than or equal to the following guidelines you are eligible for free or reduced-price meals. These guidelines are effective **July 1, 2011** through **June 30, 2012**. If you have children who approved for Supplemental Nutrition Assistance Program (SNAP) formerly known as Food Stamps, Temporary Assistance for Needy Families (TANF) or Native Family Assistance Program (NFAP), they are automatically able to receive free meals by filing an application that includes their assistance number from one of those programs. Students who are migrant, homeless, or runaways are automatically eligible and do not need to fill out an application. Foster children receive free meals regardless of the income of the household with which they reside. Note: Medicaid and Denali Kid Care case numbers do not qualify for eligibility.

Family Size	FREE MEALS			REDUCED PRICED MEALS		
	Yearly	Monthly	Weekly	Yearly	Monthly	Weekly
1	17,680	1,474	340	25,160	2,097	484
2	23,894	1,992	460	34,003	2,834	654
3	30,108	2,509	579	42,846	3,571	824
4	36,322	3,027	699	51,689	4,308	995
5	42,536	3,545	818	60,532	5,045	1,165
6	48,750	4,063	938	69,375	5,782	1,335
7	54,964	4,581	1,057	78,218	6,519	1,505
8	61,178	5,099	1,177	87,061	7,256	1,675
For each additional person	6,214	518	120	8,843	737	171

For more information, or to get an application for free or reduced-price school meals, contact us at: The Lake and Peninsula School District PO Box 498 King Salmon, AK 99613 or your local school you can also call 907-2464280 ext 311 from your local school.

We can't approve your application unless it's complete. The information you give us on your application may be checked at any time. You may apply for free or reduced price meals at any time during the school year if your situation changes. If you become unemployed, your child(ren) may be able to have free or reduced priced meals based on your unemployment income. If we deny your free or reduced price meals application, we will give you a chance to appeal the decision.

In accordance with Federal law and U.S. Department of Agriculture policy, this institution is prohibited from discriminating on the basis of race, color, national origin, sex, age, or disability. To file a complaint of discrimination, write to USDA, Director, Office of Civil Rights, 1400 Independence Avenue, SW, Washington DC 20250-9410 or call (800) 795-3272 or (202) 720-6382 (TTY). USDA is an equal opportunity provider and employer.

*Chignik Bay • Chignik Lagoon • Chignik Lake • Egegik • Igiugik • Ivanof Bay • Kokhanok • Levelock
Newhalen • Nondalton • Pedro Bay • Perryville • Pilot Point • Port Alsworth • Port Heiden*



AFN/First Alaskans Elders and Youth Conference October 20-22, 2011

This year's October convention will again take place at the
Dena'ina Convention Center in Anchorage.

Information about this year's gathering of Elders and Youth
can be found at the AFN website:

<http://www.nativefederation.org/convention/index.php>

Speak with your principal or head teacher if you are interested in
attending the 2011 conference. We hope to send a student
representative for each of our school sites to this year's conference.



Lake & Peninsula School District

101 Jensen Drive
P.O. Box 498
King Salmon, AK 99613